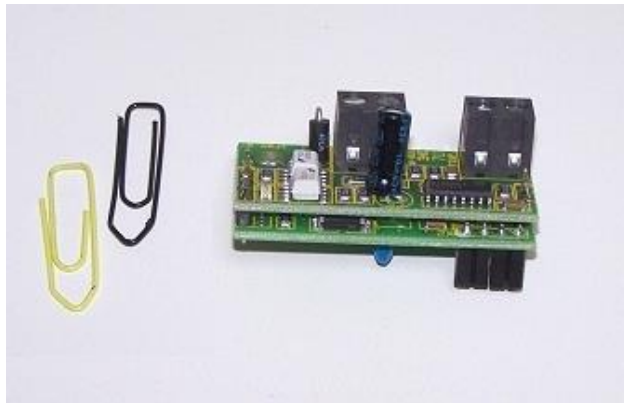


**Adaptor plug with M-BUS output**

for the TECSON device series **LX-2**, **e-litro** and Smartbox.

**Plug location:**

The adaptor has to be plugged to the designated spot of the displaying device. The M-Bus needs to be attached to the two-wired output clamp on the right hand side.



M-Bus adaptor plug connection

**Device addressing:**

The M-Bus adaptor supports 'PRIMARY' addressing, but not 'secondary' addressing.

The device address can be configured via M-Bus (2400 baud) and must be defined. When delivered, the adapter has the address 99 for first addressing.

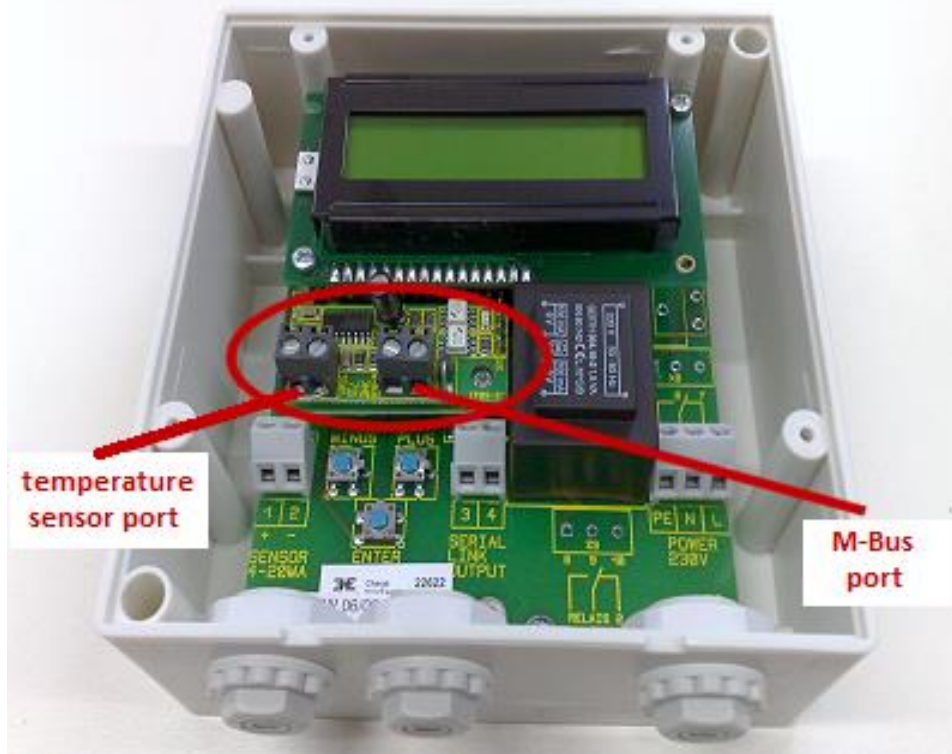
**The adapter must be assigned its ultimate primary address via an M-Bus command. If there are several devices, note a malfunction caused by an address collision!**

**Temperature measurement input:**

The adaptor has a temperature measurement input that can be used optionally. If this function is not to be used the contact bridge stays inserted in the clamping block on the left hand side.

If the temperature measurement function is intended a PT-1000 sensor (or similar) can be attached to the clamping block on the left hand side. TECSON also provides level probes with an integrated temperature sensor for a parallel measuring of the filling level as well as the temperature.

As long as this input is utilized the respective temperature value will be displayed at the device and also supplied to the M-Bus protocol.



temperature sensor port

M-Bus port